

ADMS-10

Instruction Manual

The ADMS-10 software provides convenient editing of the FT-70DR/DE memory channel frequencies, channel information and alpha tags, using a personal computer. Also the transceiver parameters and the setup menu items may be edited and configured easily from the computer keyboard.

TABLE OF CONTENTS

Introduction	3
About this manual	3
Important Notes	3
System Requirements	3
Supported Operating Systems	3
CPU	4
RAM (System Memory)	4
HDD (Hard Disk)	4
Necessary PC peripheral interfaces	4
Trademarks	4
The flow of a setup of ADMS-10	4
Setup of the ADMS-10	5
Preparation	5
ADMS-10 Programming Software Installation	5
Uninstalling the ADMS-10	6
Execute the ADMS-10	6
Connecting the FT-70DR/DE to a computer	6
Installing the Driver Software	8
Display examples	10
First Screen	10
Menu Bar	10
TAB Menu	11
Set mode screen	11
Names and Functions of Menu Bar	12
File	12
• New	12
• Open	12
• Close	12
• Save	12
• Save as	12
• Import with FT-70D format	13
• Export with FT-70D format	13
• Print	13
• Exit	13
Edit	14
• Undo	14
• Cut	14
• Copy	14
• Paste	14
• Find	14
• Find Next	15
• Goto Channel	15
• Insert Channel	15
• Delete Channel	15
• Clear Channel	15
• Move Up	15
• Move Down	15
• Add Frequency Range	16
• Sort	16
Communications (Data communication with the FT-70DR/DE) ...	17
• Get Data from FT-70D	17
• Send Data to FT-70D	17
Settings	18
• Set Mode	18
• Tool Bar	19
• Status Bar	19
Window	19
Setting the Template Items	20
Memory	20

• Memories	20
• SKIP	20
• PMS	20
About the setting items of each memory channels ...	20
• Priority CH	20
• Receive Frequency/ Transmit Frequency	20
• Offset Frequency	20
• Offset Direction	21
• AUTO MODE	21
• Operating Mode	21
• AMS	21
• DIG/ANALOG	21
• Name	21
• Tone Mode	21
• CTCSS Frequency	21
• DCS Code	21
• DCS Polarity	21
• User CTCSS	22
• Tx Power	22
• Skip	22
• AUTO STEP	22
• Step	22
• TAG	22
• Memory Mask	22
• ATT	22
• S Meter SQL	22
• BELL	22
• Half DEV	22
• Clock Shift	23
• BANK 1 to BANK 24	23
• Comments	23
VFO	24
About the setting items of VFO frequencies	24
• Receive Frequency	24
• Transmit Frequency	24
• Offset Frequency	24
• Offset Direction	24
• AUTO MODE	25
• MODE	25
• AMS	25
• DIG/ANALOG	25
• Tone Mode	25
• CTCSS Frequency	25
• DCS Code	25
• DCS Polarity	25
• User CTCSS	25
• Tx Power	25
• AUTO STEP	25
• Step	26
• ATT	26
• S Meter SQL	26
• BELL	26
• Half DEV	26
• Clock Shift	26
• Comments	26
HOME	27
About the setting items of HOME channel frequency ...	27
• Receive Frequency / Transmit Frequency	27
• Offset Frequency	27
• Offset Direction	27
• AUTO MODE	27
• MODE	28
• AMS	28
• DIG/ANALOG	28
• Name	28
• Tone Mode	28
• CTCSS Frequency	28
• DCS Code	28
• DCS Polarity	28
• User CTCSS	28

• Tx Power	28
• AUTO STEP	28
• Step	29
• TAG	29
• ATT	29
• S Meter SQL	29
• BELL	29
• Half DEV	29
• Clock Shift	29
• Comments	29
Troubleshooting	30




Introduction

The ADMS-10 programming software uses a Personal Computer to quickly enter and save the FT-70DR/DE memory channel frequencies and data. Also the many menu settings may be adapted for individual operating preferences. All of the information is saved. The setting data can be imported from the FT-70DR/DE and edited setting data can be transferred to the FT-70DR/DE.

- ☐ Edit the frequencies, memory names, squelch settings, repeater settings, transmit power, etc. that is related to the VFO, memory channels, preset memory channels, and the HOME channel, etc.
- ☐ Edit the Memory bank and bank link setting
- ☐ Configure the various set mode menu options on the computer monitor screen
- ☐ Use the handy editing functions, such as search, copy, move and paste

About this manual

This manual contains symbols and conventions to call attention to important information.

Symbols	Description
	This icon indicates cautions and alerts the user should be aware of.
	This icon indicates helpful notes, tips and information.
	This icon indicates other pages containing relevant information.

Important Notes

Before downloading this software, please read the “Important Notes” carefully.

- Copyrights and all other intellectual property rights for the software, as well as the software manual, are the property of YAESU MUSEN CO., LTD.
- The revision, modification, reverse engineering, and decompiling of this software is prohibited. Redistribution, transfer, and resale of downloaded files are also prohibited.
- Do not resell the software or manuals.
- All responsibility for the use of this software lies with the customer. Yaesu cannot be held responsible in any way for any damages or losses, which may be incurred by the customer as a result of using this software.

To use the ADMS-10 programmer, the software application must first be installed onto the computer. Read this manual thoroughly and install the software.

System Requirements

Supported Operating Systems

Microsoft® Windows® 10 (32 bit/64 bit)
Microsoft® Windows® 8.1 (32 bit/64 bit)
Microsoft® Windows® 7 (32 bit/64 bit)

CPU

The performance of the CPU must satisfy the operating system requirements.

RAM (System Memory)

The capacity of the RAM (system memory) must be more than sufficient to satisfy the operating system requirements.

HDD (Hard Disk)

The capacity of the HDD must be more than sufficient to satisfy the operating system requirements. In addition to the memory space required to run the operating system, about 50 MB or more of additional memory space is required to run the program.

Necessary PC peripheral interfaces

USB port (USB 1.1 / USB 2.0)

Trademarks

Microsoft®, Windows®, Windows® 7, Windows® 8.1, Windows® 10 are registered trademarks in the United States and other countries.

The flow of a setup of ADMS-10

The procedure when using ADMS-10 for the first time is as follows.:

ADMS-10 Programming Software Installation (📖 5 page)



Activating the ADMS-10 Programming Software (📖 6 page)



Connecting the FT-70DR/DE with a PC (📖 6 page)



Updating of the driver software (📖 8 page)



To a explanation of operation of the ADMS-10 (📖 10 page)

Setup of the ADMS-10

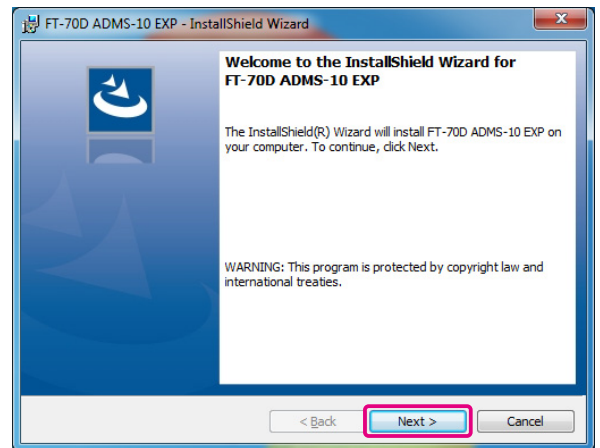
The procedure to install the ADMS-10 on a Windows 7® (64 bit) computer is shown below for the purpose of explanation.

Preparation

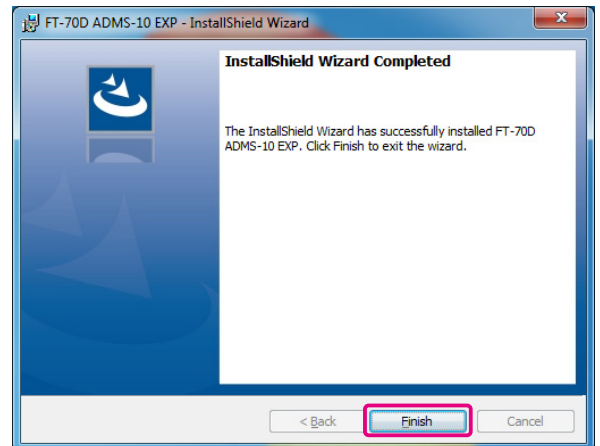
- ☐ Please download the ADMS-10 software from the Yaesu Website for details (<http://www.yaesu.com/>).
- ☐ Download the ADMS-10 Programming Software to the same folder, and extract the downloaded zip file.
- ☐ Start up the computer as an “Administrator” user.

ADMS-10 Programming Software Installation

1. Start up the computer as an “Administrator” user.
2. Double-click the “setup.exe” in the same folder that you have unzip the files.
 - When the [.NET Frameworks install] dialog box opens, follow the on-screen instructions to install.
3. The dialog box, which is shown right, will open. Click the [Next] button.



4. Select the folder to install, then click the [Next] button.
5. Click the [Install] button.
 - When the [User Account Control] dialog box opens, click the [Yes] button.
6. When the installation is finished, the dialog box shown right will open. Click the [Finish] button, to complete the installation of the software.



Uninstalling the ADMS-10

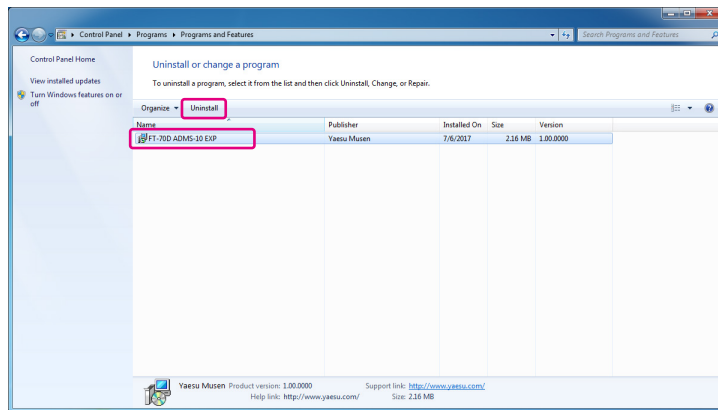
The procedure to uninstall the ADMS-10 on a Windows 7® (64 bit) computer is shown below for the purpose of explanation.

1. Disconnect the USB Cable from the computer.
2. Click the [Start] button and then “Control Panel”.



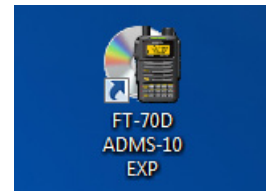
Click “Programs” and then “Uninstall”.

3. Select “FT-70D ADMS-10 EXP” then click the “Uninstall”.
- When the [User Account Control] dialog box opens, click the left mouse button on [Yes].
- The uninstall of the software will start. The unistall procedure ends with this.



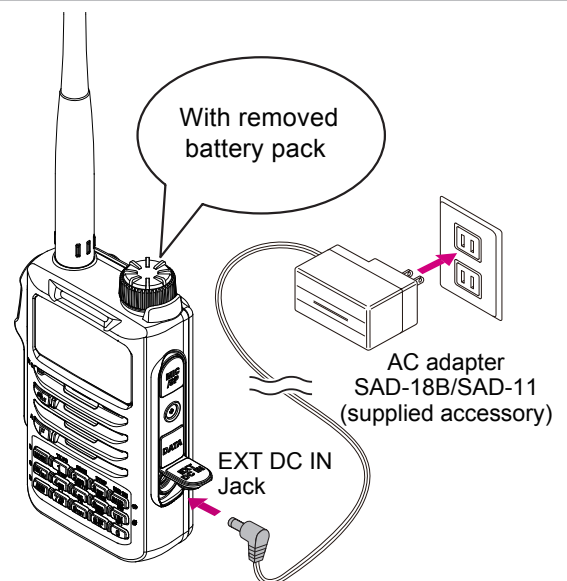
Execute the ADMS-10

Double-click the “FT-70D ADMS-10 EXP” icon on the desktop of a computer.
Click “Exit” in the “File” menu to close the ADMS-10.

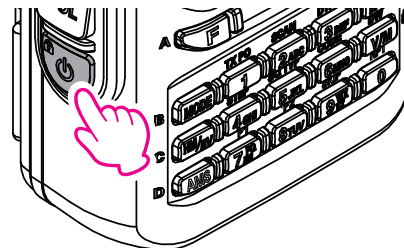


Connecting the FT-70DR/DE to a computer

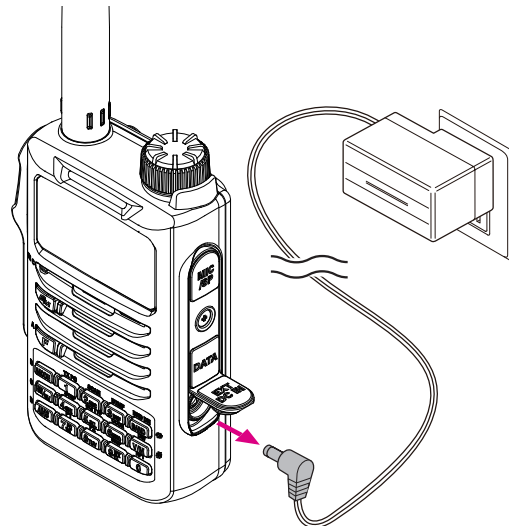
1. Remove the battery pack and connect the AC adapter to a wall outlet and then insert the DC connector to the FT-70DR/DE EXT DC IN terminal.
- “EXT DC” appear on the display.



2. Press and hold the Power switch to turn the transceiver ON.

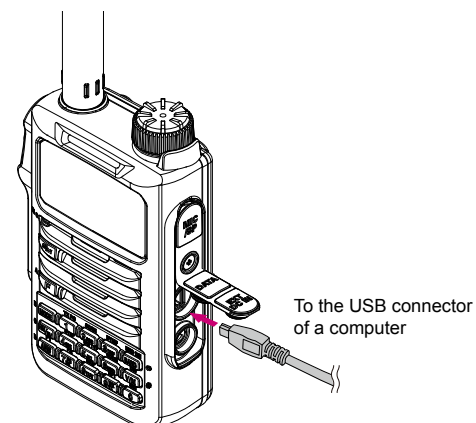


3. Remove the plug of the SAD-18B/SAD-11 with the transceiver ON.



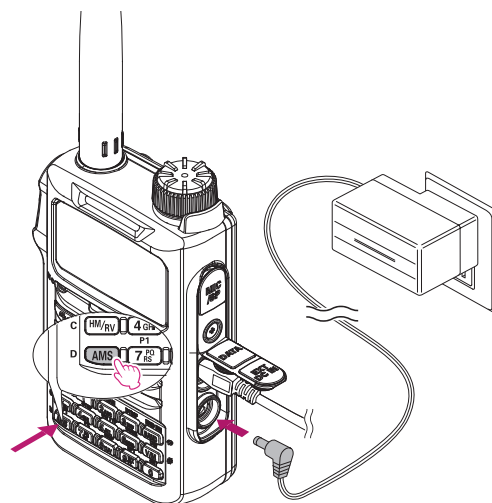
4. Use the supplied USB cable to connect the FT-70DR/DE DATA terminal to the USB connector of a computer.

- Insert the USB cable into the DATA terminal until you hear a clicking sound.



5. Press and hold in the [AMS] key while insert the DC connector of AC adapter to the FT-70/DR/DE EXT DC IN terminal.

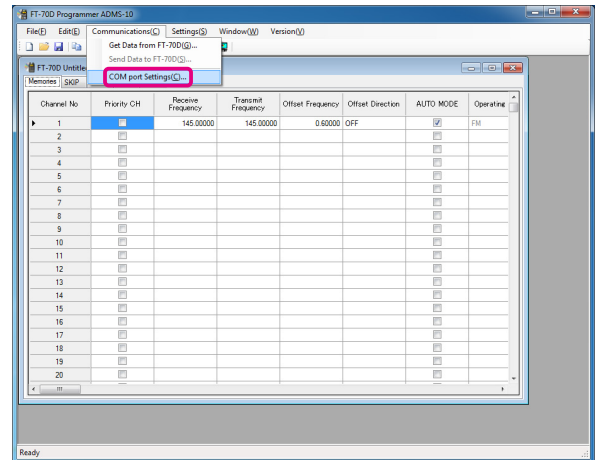
- "ADMS" appear on the display.
- Connecting to a computer is finished.



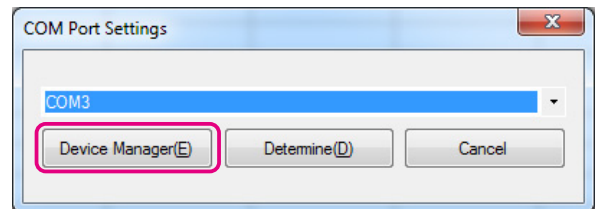
Installing the Driver Software

When a computer is connected with FT-70DR/DE for the first time, it is necessary to install driver software in a computer.

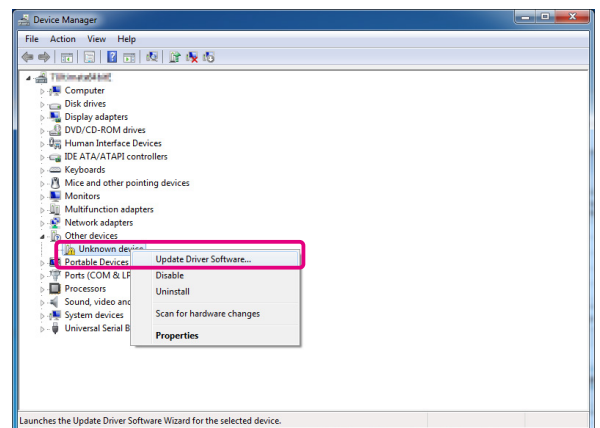
1. Connect the FT-70DR/DE to a computer (Refer to the “Connecting the FT-70DR/DE to a computer”).
2. Execute the ADMS-10 (Refer to the “Execute the ADMS-10”).
3. From the menu bar, select “Communications” menu, and then click on the “COM port Settings”.



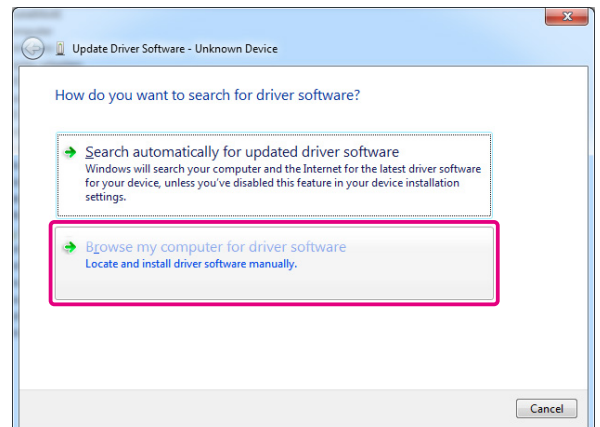
4. Click the [Device Manager] button.



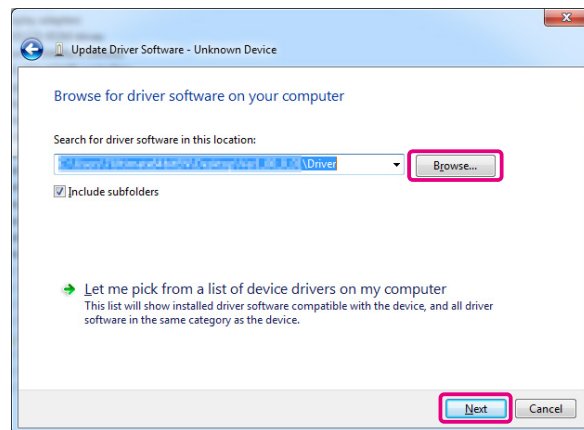
5. Under “Other devices” right-click [Unknown device], then click the [Update Driver].



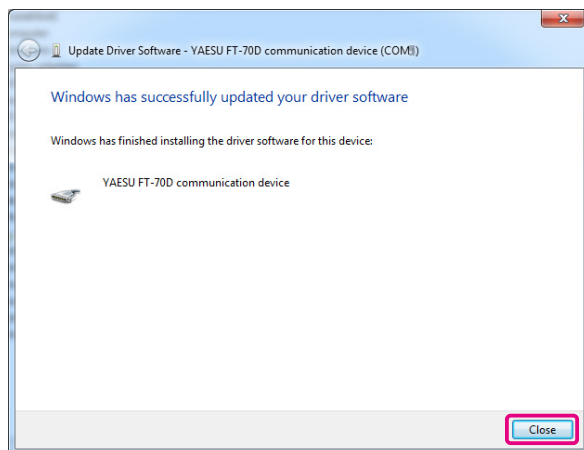
6. Click [Browse my computer for driver software].



7. Click the [Browse] button, then select the folder in which you saved the extract the downloaded file in installing the ADMS-10, and then click the [Next] button.



8. Click "Close" when the below illustrated screen is displayed.

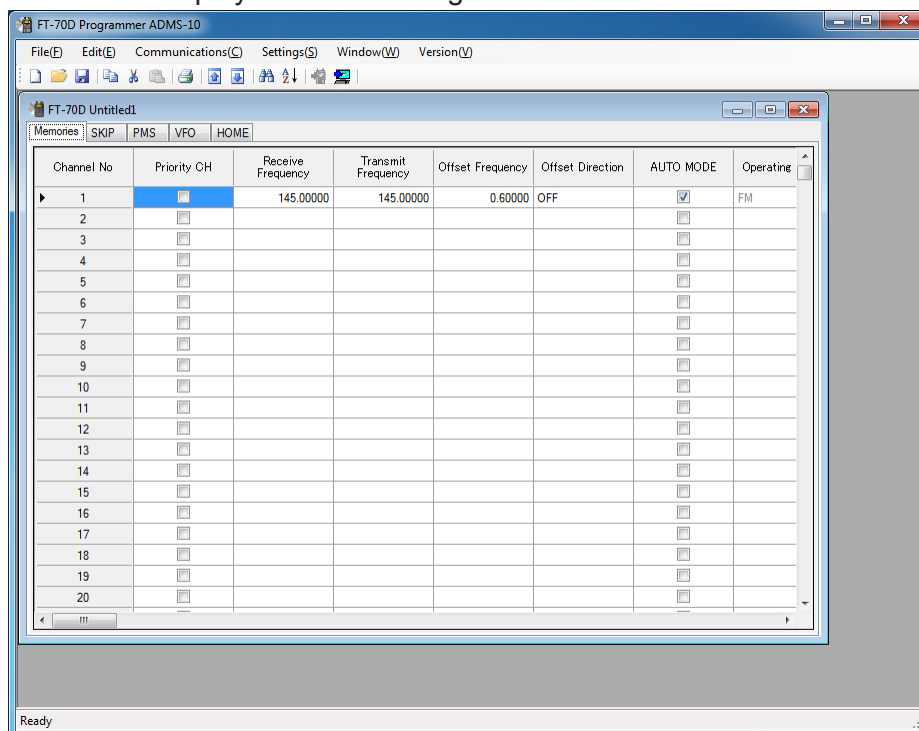


9. Check that "FT-70D communication device (COMxx)" is appears under "Ports (COM & LPT)".
- When displayed , the driver update has been completed successfully. If not displayed, try again from step 1.
 - "XX" refers to a port number. Write down the port number.
10. Close the ADMS-10 and execute the ADMS-10 once again..
11. From the menu bar, select "Communications" menu, and then click on the "COM port Settings", then select the port number of wrote down in step 9.
- To finish the installation, close the ADMS-10, and turn off the FT-70DR/DE, then disconnect the cables.

Display examples

First Screen

This is the first screen to be displayed when starting the ADMS-10 software.

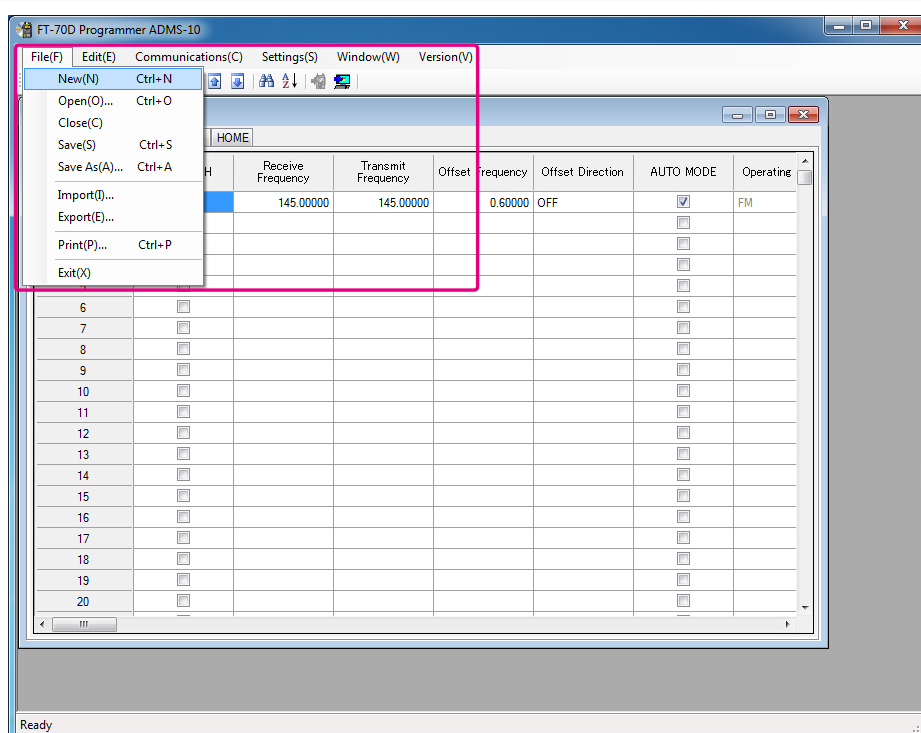


Menu Bar

Click the left mouse button on each Menu in the Menu bar to settings the import/export of the data file, get data form FT-70DR/DE and send data to FT-70DR/DE.



For more details, see "Names and Functions of Menu Bar".

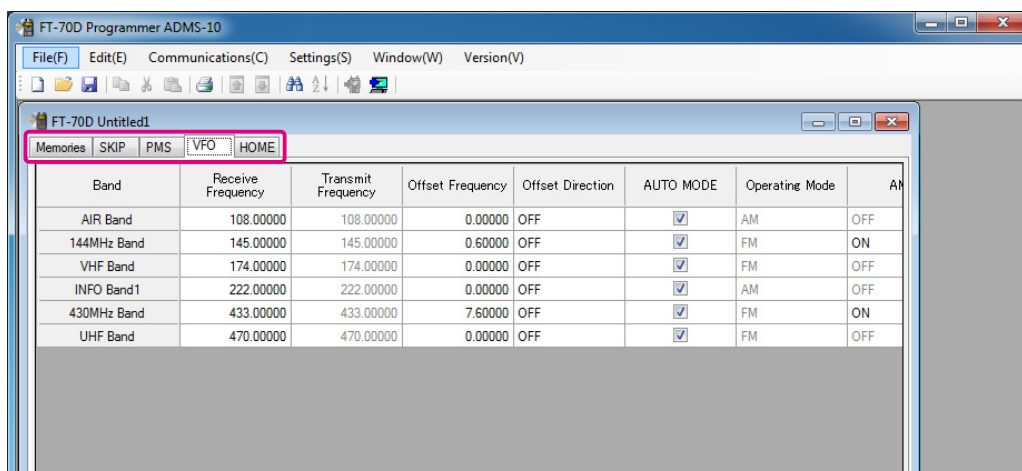


TAB Menu

Click the left mouse button on each TAB in the title bar (PMS, VFO, etc) to display the frequency list of the desired memory channels, VFO and other preset transceiver settings.



For more details, see “Setting the Template Items”.

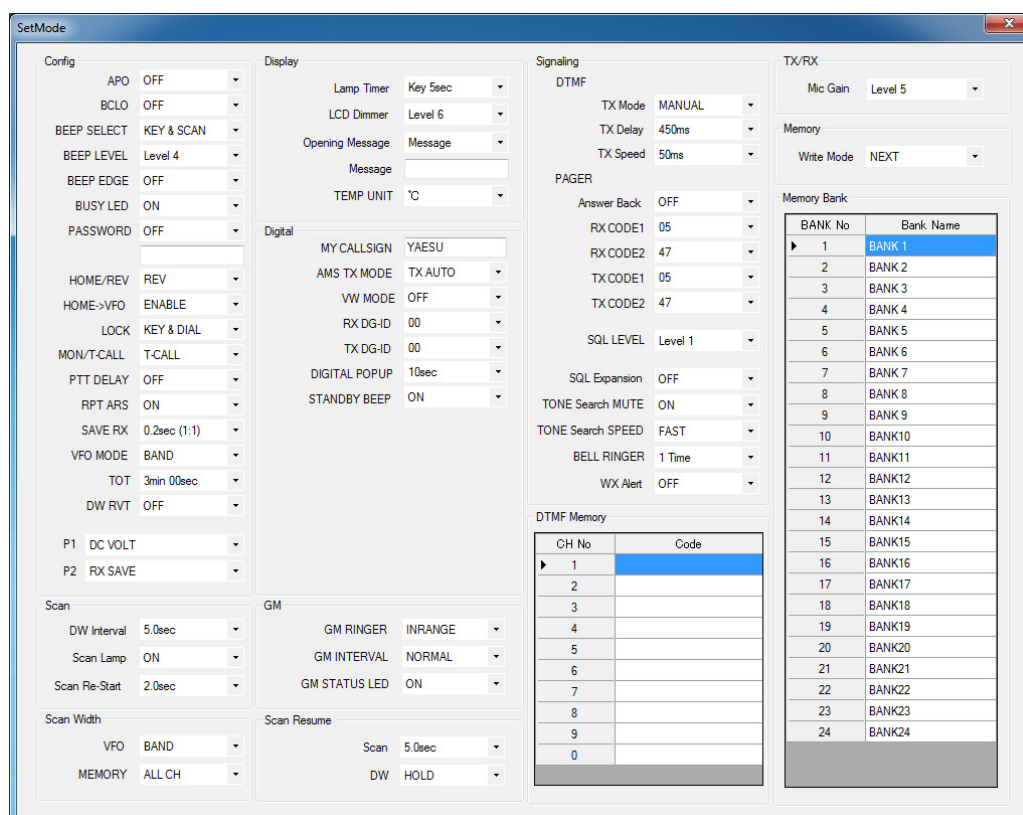


Set mode screen

Basic setting items which are not related to memory channels can be configured from “Set Mode”. Click the left mouse button on "Settings" in the "Settings" menu to open the item "Set Mode" window.

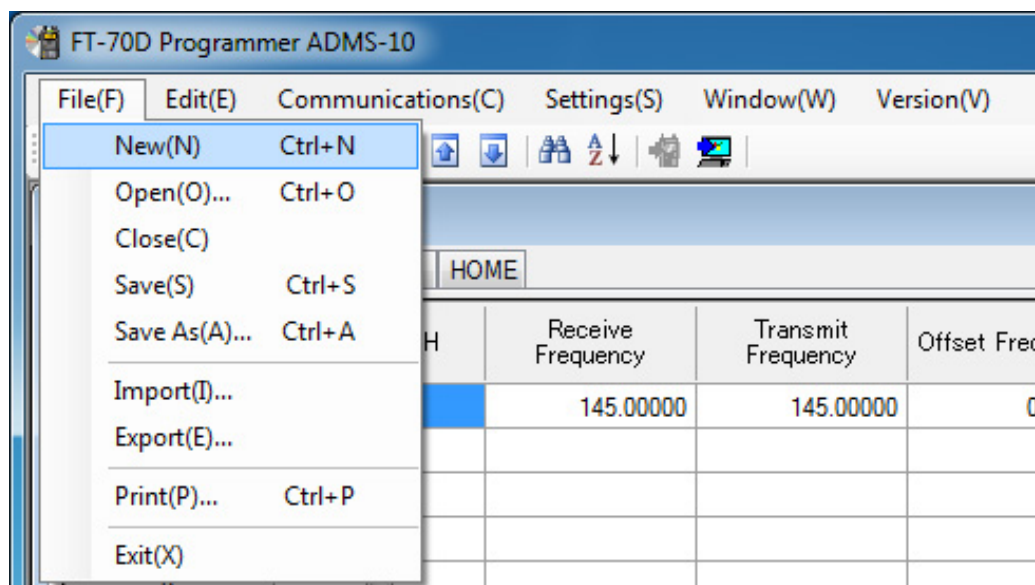


For more details, see “Set Mode”.



Names and Functions of Menu Bar

File



• New

Click the left mouse button on the "New" parameter in the "File" menu to open a new configuration file. Multiple configuration files may be created and opened at the same time. Standard values are preset for each memory channel, VFO and set mode.

• Open

Click the left mouse button on the "Open" parameter in the "File" menu to display the "Open" window. Select the existing saved template file, and click the "Open" button.

• Close

Close the displayed configuration file by clicking the left mouse button on the "Close" parameter in the "File" menu.

• Save

Click the left mouse button on the "Save" configuration in the "File" menu. To save the present configuration, and overwrite the selected configuration file without changing the file name.

• Save as

Click the left mouse button on the "Save As" parameter in the "File" menu. Specify the file name and destination folder for the selected configuration file and then click the "Save" button to save the file.

• Import with FT-70D format

ADMS-10 data files may be created using a spreadsheet such as Microsoft Excel.

To create a data file for the import of data, save the spreadsheet in the "CSV" comma separated file format. A spreadsheet may be easily created by exporting the template data in the "CSV" format using the ADMS-10 "Export" command. After the "CSV" data has been edited the spreadsheet may be imported back into the ADMS-10 Programmer.

A separate import file is needed for each template.

For example, to import the VFO and memory templates; first, click the "VFO" tab to display the VFO template, then import the VFO (CSV) file; next, click the "Memories" tab to display the "Memory" template; then import the Memory (CSV) file.



Do not edit the "Check" line at the right side end of the completed CSV file.

• Export with FT-70D format

To export the data file in the "CSV" (Comma Separated Values) format.

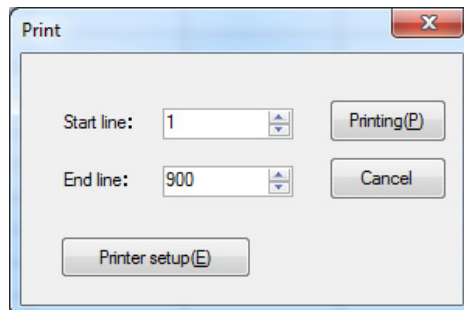
Click the left mouse button on the "Export" parameter in the "File" menu, On the "Save as" screen displayed, specify the directory and file name and save the file.

Type a file name in the bottom box, then click the left mouse button on the [OK] box.

• Print

To print the current template file data to hard copy, click the left mouse button on the "Print" parameter in the "File" menu, the "Print" window will open to enable printing. Set the start line and the end line of the data you want to print, and then click the left mouse button on the "Printing" button to start printing.

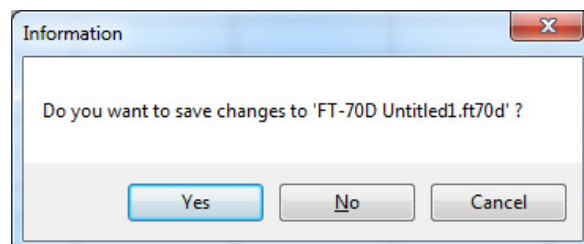
To change the specific printer settings, go to the Printer properties by clicking the left mouse button on the "Printer setup" button.



• Exit

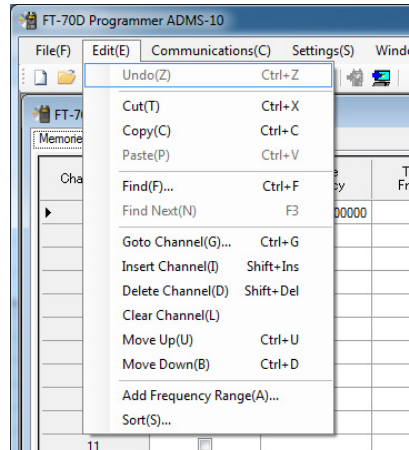
To exit the ADMS-10 programmer, click the left mouse button on the "Exit" parameter in the "File" menu to close the ADMS-10 software.

If the following pop-up screen appears to confirm saving, follow the on-screen instruction to select the desired button and close the ADMS-10 software.



Edit

Click the row to edit, then perform the following each operations.



Part of setting items of each row cannot be cut, copy, and paste is not possible.

• Undo

To undo the edited data, click the left mouse button on the "Undo" parameter in the "Edit" menu.

• Cut

To cut the data of the selected area, click the left mouse button on the "Cut" parameter in the "Edit" menu.

• Copy

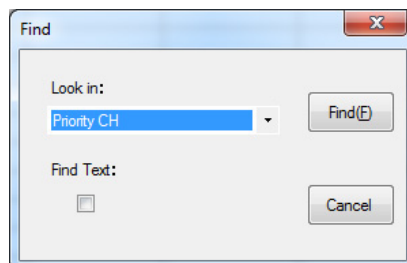
To copy the data of the selected area to the clipboard, click the left mouse button on the "Copy" parameter in the "Edit" menu.

• Paste

To paste the clipboard data to the selected area, click the left mouse button on the "Paste" parameter in the "Edit" menu.

• Find

To find a specified text, click the left mouse button on the "Find" parameter in the "Edit" menu. The "Find" window will open.



Select the column from the drop down list. Enter the text to search for, and then click the left mouse button on the **[Find]** button.

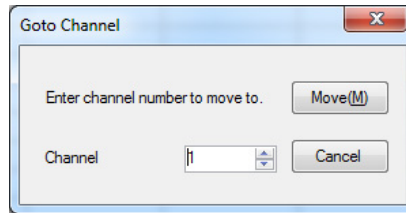
The candidate character string found will be highlighted.

- **Find Next**

Click the left mouse button on the "Find Next" parameter in the "Edit" menu to move to the next candidate character string.

- **Goto Channel**

Move the cursor to the desired channel, click the left mouse button on the "Goto Channel" parameter in the "Edit" menu to open the screen where you can specify the channel you want to move to.

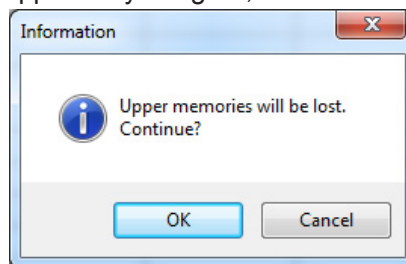


Enter the channel number you wish to find, and then click the left mouse button on the [OK] button.

- **Insert Channel**

To insert channel data, click the left mouse button on the "Insert Channel" parameter in the "Edit" menu to create a blank new channel data row under a current cursor. If there are any higher channel numbers with channel data, the higher channel numbers will be displayed after the newly inserted channel number so that the channels are displayed in the ascending order.

Attempting to insert a new channel when highest channel contains data causes the data registered to highest channel to be deleted. "Continue?" will appear. If you agree, click the left mouse button on the [OK] button.



- **Delete Channel**

To delete the specified range of channel data, click the left mouse button on the "Delete Channel" parameter in the "Edit" menu. The channels that were displayed after the deleted channels will shift up accordingly.

- **Clear Channel**

To clear the current channel data, click the left mouse button on the "Clear Channel" parameter in the "Edit" menu. The channels that were displayed after the deleted channels will not shift up and the blank channels will remain.

- **Move Up**

To move the current channel data up one row, click the left mouse button on the "Move Up" parameter in the "Edit" menu.

If other channel data already exists where the channel data moves, the existing channel will be overwritten.

- **Move Down**

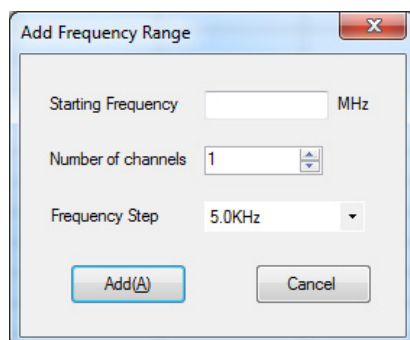
To move the current channel data down one row, click the left mouse button on the "Move Down" parameter in the "Edit" menu, the currently selected channel data moves downward one row.

If other channel data already exists where the channel data moves, the existing channel will be overwritten.

• Add Frequency Range

New channels may be created in designated frequency steps from the starting frequency by clicking the left mouse button on the "Add Frequency Range" parameter in the "Edit" menu. The "Add Frequency Range" window will open.

A specified number of memory channels may be created, beginning from the starting frequency in the specified frequency steps.

A dialog box titled "Add Frequency Range" with a close button (X) in the top right corner. It contains three input fields: "Starting Frequency" with a text box and "MHz" label, "Number of channels" with a spin box showing "1", and "Frequency Step" with a dropdown menu showing "5.0KHz". At the bottom are two buttons: "Add(A)" and "Cancel".

Starting Frequency: Enter the lower frequency

Number of Channel: Enter the number of channels

Frequency Step: Enter the desire frequency step

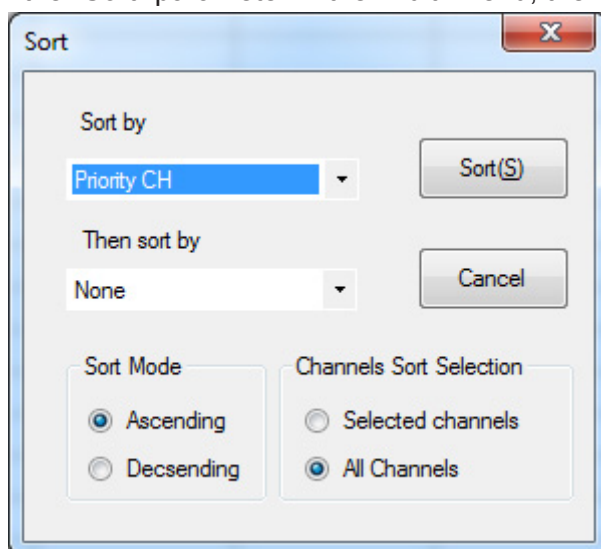
Click the left mouse button on the [OK] button to create the additional specified memory channels.



* The 8.33 kHz step is available only when receiving on the Air band (108-136.995 MHz).

• Sort

Click the left mouse button on the "Sort" parameter in the "Edit" menu, the "Sort" window will open.

A dialog box titled "Sort" with a close button (X) in the top right corner. It contains two dropdown menus: "Sort by" with "Priority CH" selected and "Then sort by" with "None" selected. To the right of these are buttons "Sort(S)" and "Cancel". Below are two groups of radio buttons. The first group, "Sort Mode", has "Ascending" selected and "Decsending" (sic) as an option. The second group, "Channels Sort Selection", has "Selected channels" and "All Channels" (selected).

Sort by: Select the first parameter for sorting items such as the order of frequencies.

Then sort by: Select the second parameter for sorting.

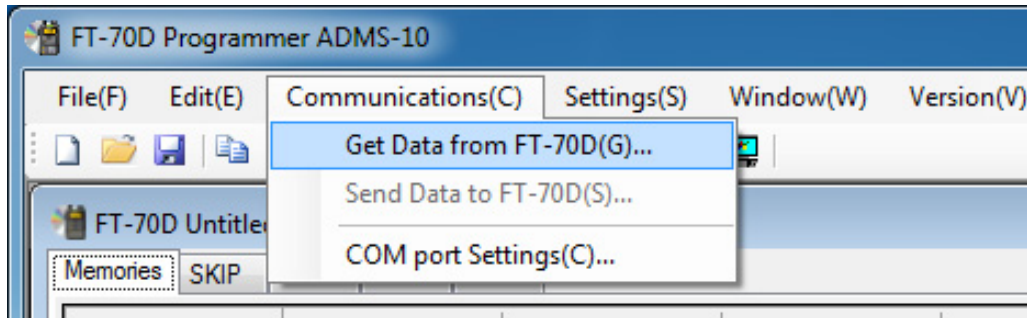
Sort Mode: Set to sort in ascending or descending order.

Channels Sort Selection: Set whether to sort the selected channel column(s) or to sort all channel columns.

Click the left mouse button on the [OK] button to initiate the sorting according to the above instructions.

The data may be restored to the previous order by using the "Undo" command.

Communications (Data communication with the FT-70DR/DE)



• Get Data from FT-70D

This command transfers the settings data of the FT-70DR/DE to the ADMS-10 programmer. To communicate with the FT2DR/DE and create a new data file. Click the left mouse button on the "Get Data from FT-70D" parameter in the "Communications" menu. The "Get Data From FT-70D" window will open. Connect the supplied USB cable between the FT-70DR/DE and the computer.

Follow the on-screen instructions to acquire data from the FT-70DR/DE. When the data transfer is completed, the template screen received from the FT-70DR/DE appears on the computer display.

The memory channels and configuration menu data may be edited using the ADMS-10 software tools.



This template and configuration data may be saved to the computer hard drive, using the "Save" or "Save as" commands in the "File" menu.

• Send Data to FT-70D

This command downloads the ADMS-10 data from the computer to the FT-70DR/DE

Click the left mouse button on the "Save Data to FT-70DR/DE" parameter in the "Communications" menu. The transmission procedure screen will open.



To load a previously created data file to the FT2DR/DE, click the "Open" parameter in the "File" menu, and open the desired file before performing the send data operation above.

Connect the supplied USB cable between the FT-70DR/DE and the computer.

Follow the on-screen instructions to transmit data to the FT-70DR/DE. After the data transmission completes, "Completed" will appear on the computer display, and click the [Close] button. Then, remove the plug of the USB cable and battery charger (SAD-18B/SAD-11) from the FT-70DE/DE, after installation of the battery pack, the FT-70DR/DE will automatically start up in accordance with the set data.



- Never disconnect the programming cable while data transmission is in progress.
- Pay careful attention to the power cable and the connections to the FT-70DR/DE and the computer, so as not to lose the power during data reception/transmission.

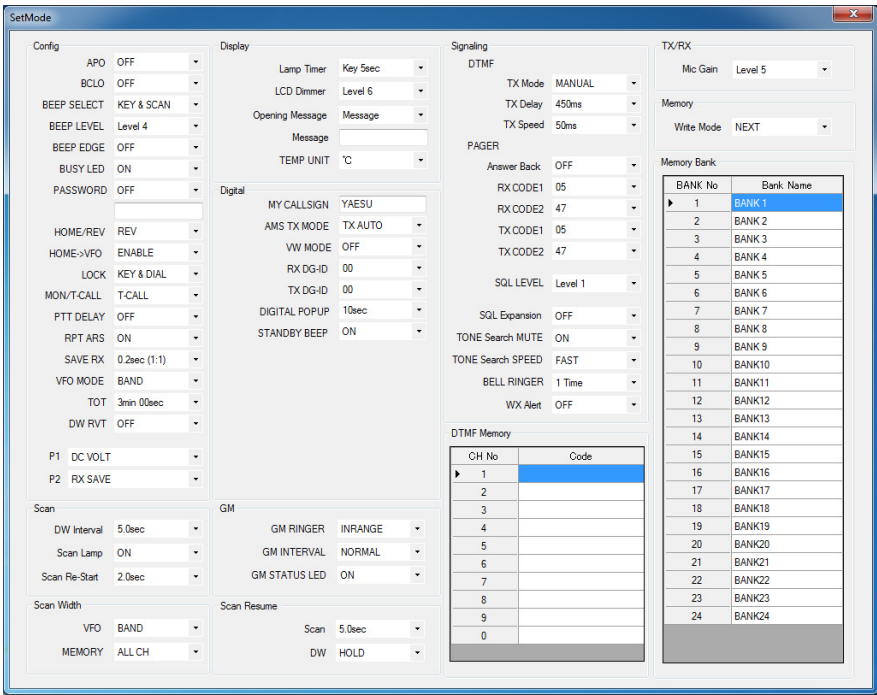
Settings

• Set Mode

From the set mode menu, you can customize the various functions of the FT-70DR/DE according to your preferences.

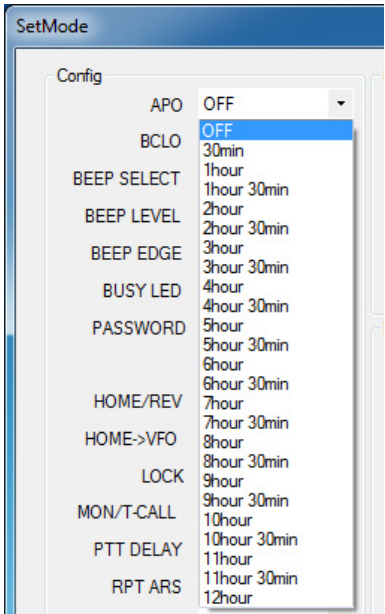
The ADMS-10 software displays the set mode menu in an easy-to-understand manner where you can change and save the setting values.

Click the left mouse button on the "Settings" parameter in the "Settings" menu to open the "SetMode" window.



To change the setting of each item in the window, click the left mouse button on the "▼" icon to show the dropdown settings list, and then click the desired selection in the list.

Example:



Refer to the "FT-70DR/DE Operating Manual" for the details of each function. When you have completed editing the settings of the Menu Setting window.

• Tool Bar

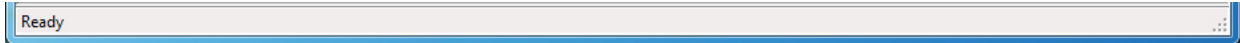
Click the left mouse button on the "Toolbar" parameter in the "Setting" menu to display or hide the Toolbar. A check mark appears next to the "Toolbar" parameter when the Toolbar is displayed.



• Status Bar

The "Status Bar" describes the action to be executed by the selected menu item, or the depressed toolbar button, and keyboard latch state.

A check mark appears next to the "Status Bar" parameter when the Status Bar is displayed.



Window

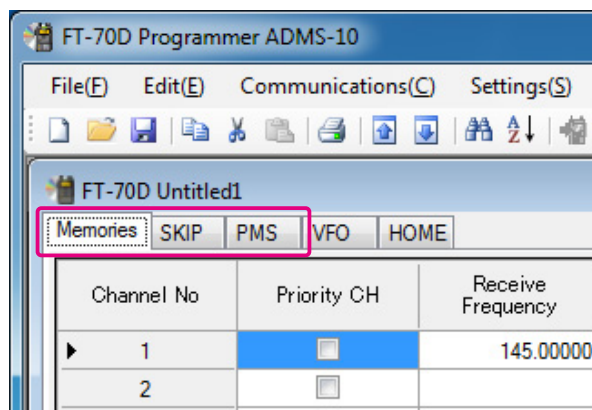
This menu sets the operating window parameters of the ADMS-8 programmer.

- Click the left mouse button on the "Tile (up and down)" parameter in the "Window" menu to display multiple template files by dividing the window into two lists (upper and lower parts).
- Click the left mouse button on the "Tile (up and down)" parameter in the "Window" menu to display multiple template files by dividing the window into two lists (right and left parts).
- Click the left mouse button on the "Cascade" parameter in the "Window" menu to display multiple templates in cascade format.

Setting the Template Items

Memory

Use this page to edit the Memory channels data, Skip Memory channels, or PMS (Programmable Memory Scan) memory channels.



• Memories

Enter and edit the frequencies you normally use to the memory channels. Up to 900 channels can be registered.

• SKIP

When scanning the VFO, if there are frequencies with continuous signals, scanning may be interrupted. Up to 99 channels can be registered.

• PMS

Edit the upper and lower limit frequencies for performing PMS (Programmable Memory Scan). Enter the lower limit frequency for the L channel and the upper limit frequency for the corresponding U channel. Up to 50 pairs (100 channels) of PMS can be registered.

About the setting items of each memory channels

• Priority CH

While Dual Watch is functioning, this channel is designated as the priority channel to be monitored before other channels. Only one normal memory channel can be set as Priority CH. Tick the checkbox of the desired channel.

This setting is allowed only with the normal memory channel.

• Receive Frequency/ Transmit Frequency

Enter the desired receive/transmit frequency. When the frequency entry is complete, use the → key to move the cursor to the right and subsequently configure the additional detail settings for the channel. To enter the transmit frequency for the next channel, press the ENTER or ↓ key. The receive and transmit frequencies can be set separately.

• Offset Frequency

When a transmit frequency is not entered, transmission will be performed at a frequency obtained by adding/subtracting the offset frequency to/from the receive frequency.

• Offset Direction

Set the frequency shift direction.

- OFF: The transmit frequency is not shifted.
-RPT: The transmit frequency is shifted to the minus offset.
+RPT: The transmit frequency is shifted to the plus offset.
-/+: The transmit frequency is not shifted.

• AUTO MODE

When tick the check box of AUTO MODE, the receive mode (FM mode or AM mode) is automatically selected. Un-ticking the checkbox enables selecting the operating mode.

• Operating Mode

Select the operating mode for receive channel.

- FM: The selected frequency band is set to FM mode.
AM: The selected frequency band is set to AM mode.

• AMS

The AMS (Automatic Mode Select) function automatically selected the transmission mode in accordance with the received signals may set ON/OFF.

• DIG/ANALOG

The V/D mode (DN), the Voice FR mode (VW) and the ANALOG mode (FM/AM mode) are selectable.



When the Set Mode [16 DIG VW] is set to “OFF”, the Voice FR mode (VW) can not be selected.

• Name

Enter the desired memory name (up to 6 digits).

• Tone Mode

This item selects the Audio Squelch Code type.

• CTCSS Frequency

This item selects the Tone Frequency of the Tone Squelch.

• DCS Code

Select the DCS code when DCS is set.

• DCS Polarity

Change the phase inversion of the DCS code for receive/transmit. When communication using the DCS code cannot be achieved, changing the phase inversion might enable the DCS code communication.

• User CTCSS

Select the idle line frequency to remove signals such as idle line signals used by private railways and control signals of MCA radio system.

• Tx Power

This item selects the TX Power.

• Skip

Select the scanning condition for receiving channels.

OFF: Performs scanning according to the set mode basic setting –SCAN RESUME.

SKIP: Skips the designated memory channels during scanning.

SELECT: Starts scanning from a designated channel and scans only designated channels.

• AUTO STEP

By ticking the checkbox of this item, the frequency step is set to “AUTO” automatically provides a suitable frequency step (frequency variation by rotating the **DIAL** knob) according to the frequency band. By turning off the checkbox, the step setting become selectable.

• Step

Sets the channel step for receiving channels.

• TAG

Setting the memory tag, the checkbox of TAG is automatically ticked. When recalling this memory channel, the set memory tag is displayed. By Turning off the checkbox, the receive frequency is displayed instead of the memory tag.

• Memory Mask

By ticking the checkbox of this item, the channel may not recall temporally.
Un-ticking the checkbox enables calling the memory channel.

• ATT

By ticking the checkbox of this item, the receive sensitivity is lowered by about 10dB. This is useful when, for example, an adjacent strong radio wave interferes with the reception.

• S Meter SQL

Configure the normal noise squelch setting, and also the S-meter squelch level setting.

• BELL

Outputs a ringing tone when receiving a signal that satisfies the conditions set from the squelch type. Set the number of times the tone (bell) rings.

• Half DEV

Lowers the transmit deviation to approximately half.

• **Clock Shift**

When an internal spurious signal occurs due to the microcomputer clock, turn this setting on (tick the checkbox). This may improve the situation.

Usually, this item is set to "OFF" (un-tick the checkbox).

• **BANK 1 to BANK 24**

A combination of up to 100 memory channels and preset memory channels can be registered to each of BANK 1 to BANK 24. In the column of each channel, tick the checkbox of the BANK to register the desired channel.

When recalling a bank, only channels registered to the bank will be recalled.

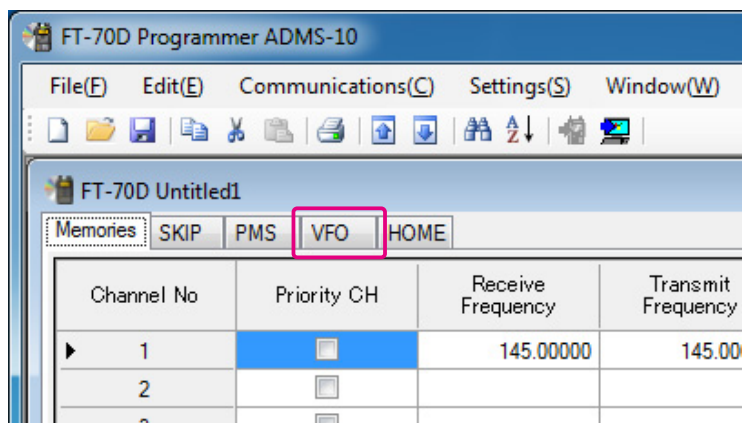
• **Comments**

Comments may be added to the registered memory channels. Up to 255 letters can be used. This function is useful in organizing the memory channels by, for example, applying a category name to each channel.

These comments are not transferred to the FT-70DR/DE.

VFO

Edit the VFO configurations for each band on this page template.

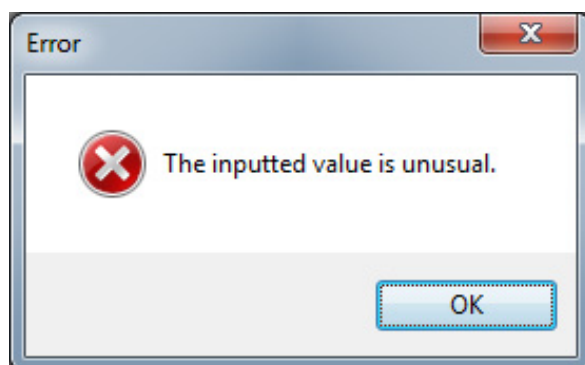


About the setting items of VFO frequencies

• Receive Frequency

Enter the VFO frequencies for each band. The FT-70DR default Frequencies are pre-entered into the ADMS-10 standard template.

A frequency that is out of the transceiver's range cannot be entered. When the error pop-up window is opened, enter the correct frequency.



• Transmit Frequency

The transmit frequency display is grayed out, and it will be set automatically, in accordance with the receive, and the offset frequencies.

• Offset Frequency

When a transmit frequency is not entered, transmission will be performed at a frequency obtained by adding/subtracting the offset frequency to/from the receive frequency.

• Offset Direction

Set the frequency shift direction.

OFF: The transmit frequency is not shifted.

-RPT: The transmit frequency is shifted to the minus offset.

+RPT: The transmit frequency is shifted to the plus offset.

• **AUTO MODE**

When tick the check box of AUTO MODE, the receive mode (FM mode or AM mode) is automatically selected. Un-ticking the checkbox enables selecting the operating mode.

• **MODE**

Select the operating mode for receive channel.

FM: The selected frequency band is set to FM mode.

AM: The selected frequency band is set to AM mode.

• **AMS**

The AMS (Automatic Mode Select) function automatically selected the transmission mode in accordance with the received signals may set ON/OFF.

• **DIG/ANALOG**

The V/D mode (DN), the Voice FR mode (VW) and the ANALOG mode (FM/AM mode) are selectable.



When the Set Mode [16 DIG VW] is set to “OFF”, the Voice FR mode (VW) can not be selected.

• **Tone Mode**

This item selects the Audio Squelch Code type.

• **CTCSS Frequency**

This item selects the Tone Frequency of the Tone Squelch.

• **DCS Code**

Select the DCS code when DCS is set.

• **DCS Polarity**

Change the phase inversion of the DCS code for receive/transmit. When communication using the DCS code cannot be achieved, changing the phase inversion might enable the DCS code communication.

• **User CTCSS**

Select the idle line frequency to remove signals such as idle line signals used by private railways and control signals of MCA radio system.

• **Tx Power**

This item selects the TX Power.

• **AUTO STEP**

By ticking the checkbox of this item, the frequency step is set to “AUTO” automatically provides a suitable frequency step (frequency variation by rotating the **DIAL** knob) according to the frequency band. By Turning off the checkbox, the step setting become selectable.

- **Step**

Sets the channel step for receiving channels.

- **ATT**

By ticking the checkbox of this item, the receive sensitivity is lowered by about 10dB. This is useful when, for example, an adjacent strong radio wave interferes with the reception.

- **S Meter SQL**

Configure the normal noise squelch setting, and also the S-meter squelch level setting.

- **BELL**

Outputs a ringing tone when receiving a signal that satisfies the conditions set from the squelch type. Set the number of times the tone (bell) rings.

- **Half DEV**

Lowers the transmit deviation to approximately half.

- **Clock Shift**

When an internal spurious signal occurs due to the microcomputer clock, turn this setting on (tick the checkbox). This may improve the situation.

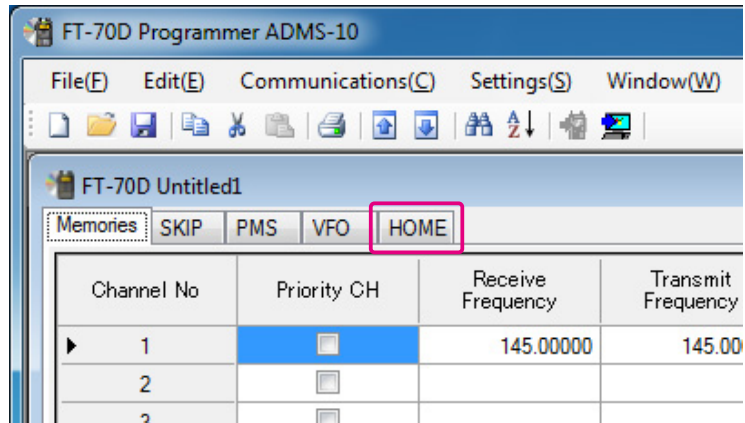
Usually, this item is set to "OFF" (un-tick the checkbox).

- **Comments**

Comments may be added to the edited VFO channels. Up to 255 letters can be used. This function is useful in organizing the VFO channels by, for example, applying a category name to each channel. These comments are not transferred to the FT-70DR/DE.

HOME

Edit the Home Channel configurations:

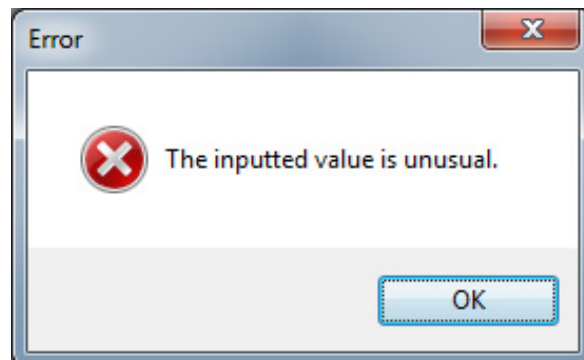


About the setting items of HOME channel frequency

• Receive Frequency / Transmit Frequency

Enter any desired changes into Home Channel frequency. The FT-70DR default Frequencies are pre-entered into the ADMS-10 standard template.

A frequency that is out of the transceiver's range cannot be entered. When the error pop-up window is opened, enter the correct frequency. Inputting the receive frequency, the transmit frequency is automatically set.



• Offset Frequency

When a transmit frequency is not entered, transmission will be performed at a frequency obtained by adding/subtracting the offset frequency to/from the receive frequency.

• Offset Direction

Set the frequency shift direction.

- OFF: The transmit frequency is not shifted.
- RPT: The transmit frequency is shifted to the minus offset.
- +RPT: The transmit frequency is shifted to the plus offset.
- /+ : The transmit frequency is not shifted.

• AUTO MODE

When tick the check box of AUTO MODE, the receive mode (FM mode or AM mode) is automatically selected. By Turning off the checkbox, the receive mode is selectable.

• **MODE**

Select the operating mode for receive channel.

FM: The selected frequency band is set to FM mode.

AM: The selected frequency band is set to AM mode.

• **AMS**

The AMS (Automatic Mode Select) function automatically selected the transmission mode in accordance with the received signals may set ON/OFF.

• **DIG/ANALOG**

The V/D mode (DN), the Voice FR mode (VW) and the ANALOG mode (FM/AM mode) are selectable.



When the Set Mode [16 DIG VW] is set to "OFF", the Voice FR mode (VW) can not be selected.

• **Name**

Enter the desired memory name (up to 6 digits).

• **Tone Mode**

This item selects the Audio Squelch Code type.

• **CTCSS Frequency**

This item selects the Tone Frequency of the Tone Squelch.

• **DCS Code**

Select the DCS code when DCS is set.

• **DCS Polarity**

Change the phase inversion of the DCS code for receive/transmit. When communication using the DCS code cannot be achieved, changing the phase inversion might enable the DCS code communication.

• **User CTCSS**

Select the idle line frequency to remove signals such as idle line signals used by private railways and control signals of MCA radio system.

• **Tx Power**

This item selects the TX Power.

• **AUTO STEP**

By ticking the checkbox of this item, the frequency step is set to "AUTO" automatically provides a suitable frequency step (frequency variation by rotating the DIAL knob) according to the frequency band. By Turning off the checkbox, the step setting become selectable.

- **Step**

Sets the channel step for receiving channels. Normally, when a frequency is entered, the optimal channel step will be automatically set according to the frequency.

- **TAG**

Setting the memory tag, the checkbox of TAG is automatically ticked. When recalling this memory channel, the set memory tag is displayed. By Turning off the checkbox, the receive frequency is displayed instead of the memory tag.

- **ATT**

By ticking the checkbox of this item, the receive sensitivity is lowered by about 10dB. This is useful when, for example, an adjacent strong radio wave interferes with the reception.

- **S Meter SQL**

Configure the normal noise squelch setting, and also the S-meter squelch level setting.

- **BELL**

Outputs a ringing tone when receiving a signal that satisfies the conditions set from the squelch type. Set the number of times the tone (bell) rings.

- **Half DEV**

Lowers the transmit deviation to approximately half.

- **Clock Shift**

When an internal spurious signal occurs due to the microcomputer clock, turn this setting on (tick the checkbox). This may improve the situation.

Usually, this item is set to "OFF" (un-tick the checkbox).

- **Comments**

Comments may be added to the edited HOME channels. Up to 255 letters can be used. This function is useful in organizing the HOME channels by, for example, applying a category name to each channel.

These comments are not transferred to the FT-70DR/DE.

Troubleshooting

The FT-70DR/DE cannot receive or transmit data to the computer. The Data transfer does not start.

- Verify that the programming cable is correctly connected to the FT-70DR/DE data port and to the Computer.
Connect correctly.
- The battery of the FT-70DR/DE may be depleted.
Charge the battery or replace the battery with the new one.
- Is the computer COM Port setting correct?
Set the COM Port correctly.
- Are you operating in a different order from the clicked the “Get Data from FT-70D” in the “Communications” menu and displayed procedure?
- Follow the on-screen instructions.
- Are you operating in a different order from the clicked the “Send Data to FT-70D” in the “Communications” menu and displayed procedure?
Follow the on-screen instructions.

The data transmission has stopped before completion

- Disconnecting the connection cable or poor contact of the connection cable.
Confirm the cable connection and try again.
- The battery of the FT-70DR/DE may be depleted.
Charge the battery or replace the battery with the new one.

The data import/export is not successful

- Adjust the number of the rows of CSV file.
- Use the designated letter for the character string.
- When importing and exporting channels such as memory channels and VFO channels, make sure that the template files are consistent. If the template files are different, an error will occur and the data import and export will not be successful.



Copyright 2017
YAESU MUSEN CO., LTD.
All rights reserved.

No portion of this manual may be
reproduced without the permission of
YAESU MUSEN CO., LTD.

YAESU MUSEN CO., LTD.

Tennozu Parkside Building
2-5-8 Higashi-Shinagawa, Shinagawa-ku, Tokyo 140-0002 Japan

YAESU USA

6125 Phyllis Drive, Cypress, CA 90630, U.S.A.

YAESU UK

Unit 12, Sun Valley Business Park, Winnall Close
Winchester, Hampshire, SO23 0LB, U.K.